

GMP
ISO9001
ISO14001
ISO13485
CERTIFIED

PIHSIANG[®]

SHOPRIDER[®]

MODEL: **TE-889NRF**



(PATENTED)

PIHSIANG MACHINERY MFG. CO., LTD.

NO.108, HSIN-HE ROAD, HSIN-FENG HSIANG 304
HSINCHU COUNTY, TAIWAN

TABLE OF CONTENTS
ILLUSTRATION

FIGURE 1	FRONT CHASSIS ASSEMBLY-----	P 1
FIGURE 2	REAR CHASSIS ASSEMBLY-----	P 4
FIGURE 3	DRIVE-TRAIN ASSEMBLY-----	P 7
FIGURE 4	MOTOR ASSEMBLY -----	P 9
FIGURE 5	REAR WHEEL ASSEMBLY-----	P 11
FIGURE 6	FRONT AXLE ASSEMBLY-----	P 13
FIGURE 7	CONNECTING ROD ASSEMBLY -----	P 16
FIGURE 8	FRONT WHEEL ASSEMBLY-----	P 18
FIGURE 9	HEAD LIGHT ASSEMBLY-----	P 20
FIGURE 10	HANDLE BAR + HAND GRIP ASSEMBLY-----	P 22
FIGURE 11	HANDLE BAR JOINT BASE ASSEMBLY-----	P 24
FIGURE 12	DELUXE SEAT ASSEMBLY -----	P 26
FIGURE 13	FRONT CHASSIS COVER ASSEMBLY-----	P 28
FIGURE 14	REAR CHASSIS COVER ASSEMBLY-----	P 30
FIGURE 15	HANDLE BAR COVER ASSEMBLY-----	P 33
FIGURE 16	REAR TILLER COVER ASSEMBLY-----	P 36
FIGURE 17	UPPER CONTROLLER ASSEMBLY-----	P 38
FIGURE 18	HANDLE BAR ASSEMBLY -----	P 41
FIGURE 19	MAIN CONTROL BOX ASS'Y -----	P 43
FIGURE 20	W/ BATTERY KIT -----	P 45
FIGURE 21	CONTROL AND BATTERY WIRING ILLUSTRATION-----	P 47
	APPENDIX (1)-----	P 49

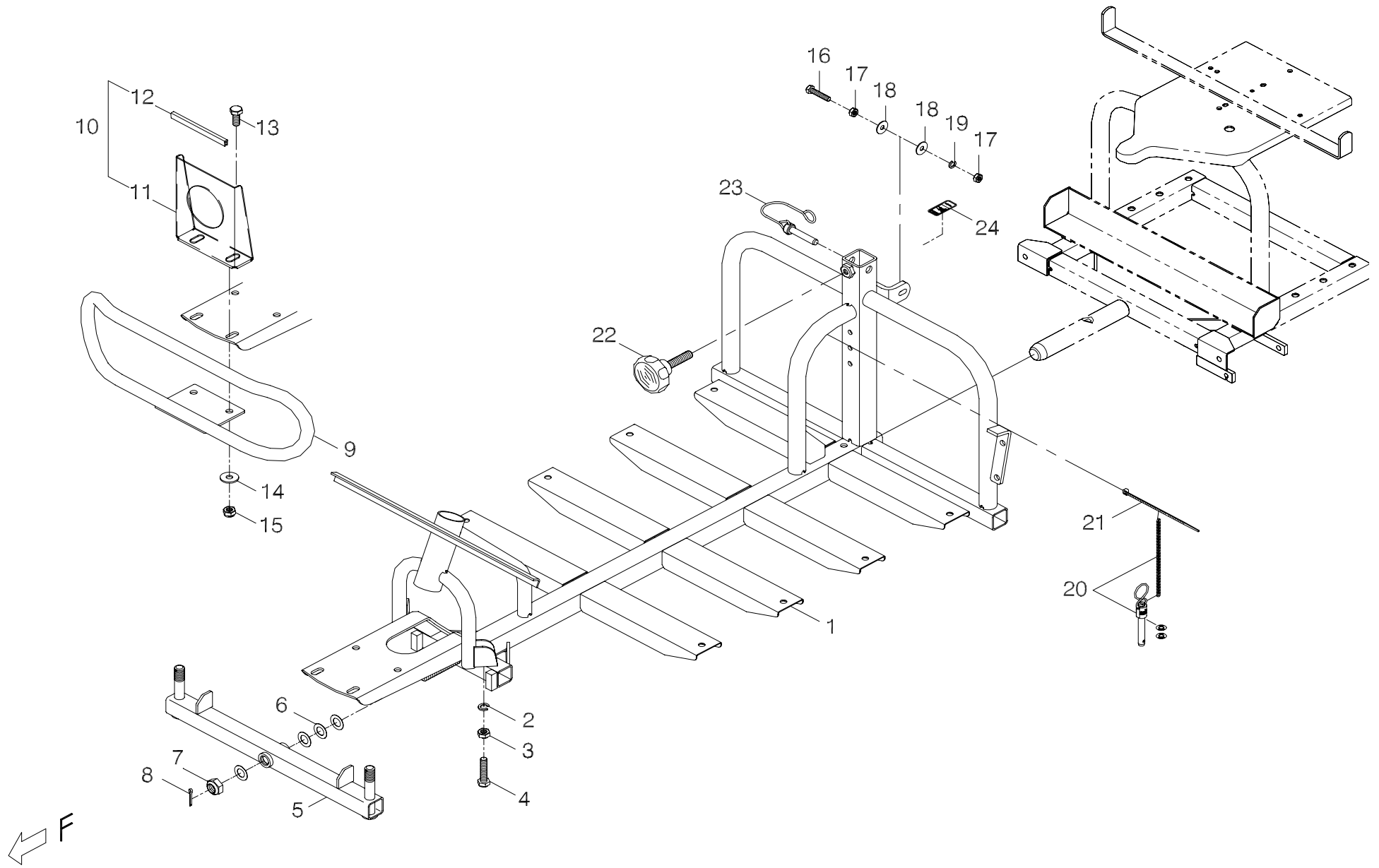


FIG.1

FIG. & Index NO.	Part NO.	Qty.	Description	Specification
1	-----		Front chassis assembly	
1-1	102101-90102	1	Front chassis assembly	889ND#1
			----- * -----	
1-2	5022-08013-210	2	Spring washer	φ8*13,Multicolored Galvanized
1-3	5011-08013-200	2	Nut	M8*P1.25*13,Multicolored Galvanized
1-4	5001-08035-210	2	Hex head screw	M8*P1.25*35L,Multicolored Galvanized
			----- * -----	
1-5	101801-89100	1	Front axle assembly	889
1-6	5021-12021-210	4	Washer	φ12*21*0.5t,Multicolored Galvanized
1-7	5014-12019-210	1	Self-lock nut	M12*P1.25*19,Multicolored Galvanized
1-8	5023-03018-110	1	Split pin	M2*18L,PI03018B,Zinc Galvanized
			----- * -----	
1-9	202901-88100	1	Front bumper	Round
1-10	102906-89100	1	Front cover support bracket assembly	889,A318
1-11	4001318-00	1	Front cover support plate	A318
1-12	209934-88100	1	U shape strap	5.5*8.5mm
1-13	5001-08020-210	2	Hex head screw	M8*P1.25*20L,Multicolored Galvanized
1-14	5021-08022-210	2	Washer	φ8*22*2t,Multicolored Galvanized
1-15	5012-08013-200	2	Nylon lock nut	M8*P1.25*13 7.8t,Multicolored Galvanized
			----- * -----	
1-16	5001-06030-210	2	Hex head screw	M6*P1.0*30L,Multicolored Galvanized
1-17	5011-06010-200	4	Nut	M6*P1.0*10*5L,Multicolored Galvanized
1-18	5021-06018-210	4	Washer	φ6*18*1t,Multicolored Galvanized
1-19	5022-06010-210	2	Spring washer	φ6*10,Multicolored Galvanized

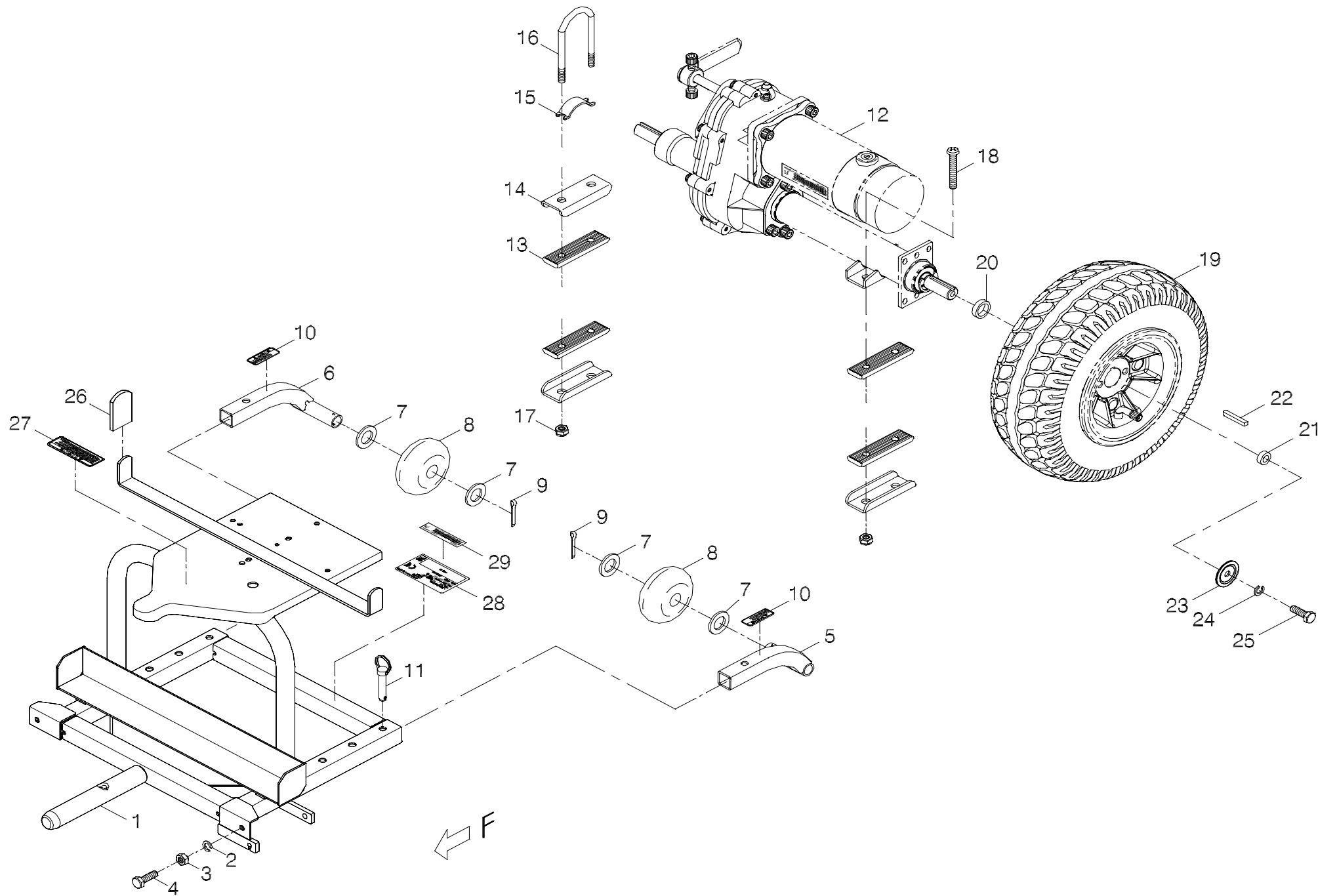


FIG.2

FIG. & Index NO.	Part NO.	Qty.	Description	Specification
2	-----		Rear chassis assembly	
2-1	102201-89201	1	Rear chassis assembly	889NB#1
2-2	5022-08013-210	2	Spring washer	φ8*13,Multicolored Galvanized
2-3	5011-08013-200	2	Nut	M8*P1.25*13,Multicolored Galvanized
2-4	5001-08025-210	2	Hex head screw	M8*P1.25*25L,Multicolored Galvanized
			-----*-----	
2-5	102918-89800	1	Anti-tip wheel frame assembly	Left,889A
2-6	102919-89800	1	Anti-tip wheel frame assembly	Right,889A
2-7	4001305-00	4	Washer	A305,φ17.5*30*2.6t
2-8	2399-00100-00	2	anti-tip wheel	φ17*75*30t
2-9	5023-03025-210	2	Split pin	M3*25L,Multicolored Galvanized
2-10	301174-06	2	Warning sticker	N74-6
			-----*-----	
2-11	202922-88100	2	Pin	M7.8*40L,PP08040B
			-----*-----	
2-12	-----	REF(1)	Drive-train assembly	
			-----*-----	
2-13	209909-88100	4	Rubber	
2-14	4001168-00	3	Bracket	A168
2-15	4001192-00	1	Bracket	A192
2-16	4003210-01	1	Screw	C210-1
2-17	5012-08013-200	4	Nylon lock nut	M8*P1.25*13 7.8t,Multicolored Galvanized
2-18	5005-08050-210	2	Screw	M8*P1.25*50L,Multicolored Galvanized
			-----*-----	

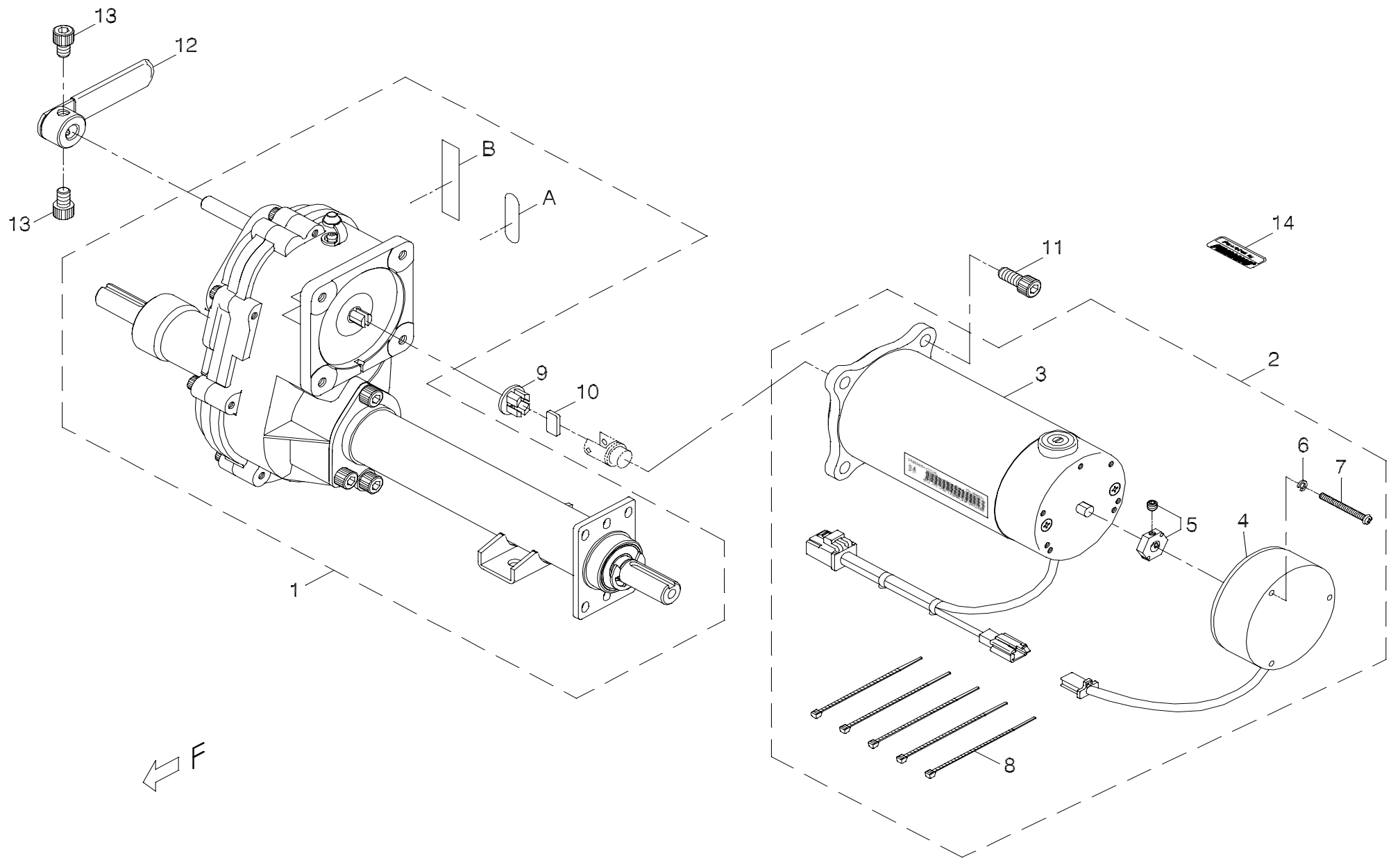


FIG.3

FIG. & Index NO.	Part NO.	Qty.	Description	Specification
3	100001-89504	1	Drive-train assembly	9MNF-2A,#6,889NTBG
3-1	100401-89102-A3	1	Transaxle assembly	889NTBG(#1-1),Black(A3)
3-A	301174-09	REF(1)	Warning sticker	
3-B	-----	REF(1)	Decal	
3-2	100101-89508	1	Motor and Brake Assembly	9MNF-2A,#6
3-3	100201-89603-A2	1	Motor assembly	9MNF-2A,Black,A2
3-4	100309-88100	1	Electromagnetic brake assembly	#6
3-5	200301-66400	1	Disc brake driving axle	#1,φ8*19.1*6L
3-6	5022-04007-210	3	Spring washer	φ4*7*1.25t,Multicolored Galvanized
3-7	5005-04040-210	3	Screw	M4*P0.7*40L,Multicolored Galvanized
3-8	505201-00900-50	5	Cable Tie	YJ-90,Black
3-9	200904-88100	1	Bushing	
3-10	200905-88100	1	Plate	
3-11	5002-08020-220	4	CAP HEAD ALLEN SCREW	M8*P1.25*20L,Multicolored Galvanized
3-12	200902-88100	1	Free wheel handle	100L
3-13	5002-08012-220	2	CAP HEAD ALLEN SCREW	M8*P1.25*12L,Multicolored Galvanized
3-14	301179-04	1	Instruction sticker	N79-4
-----	9005-004	1	Transmission grease	GP-000/180Kg

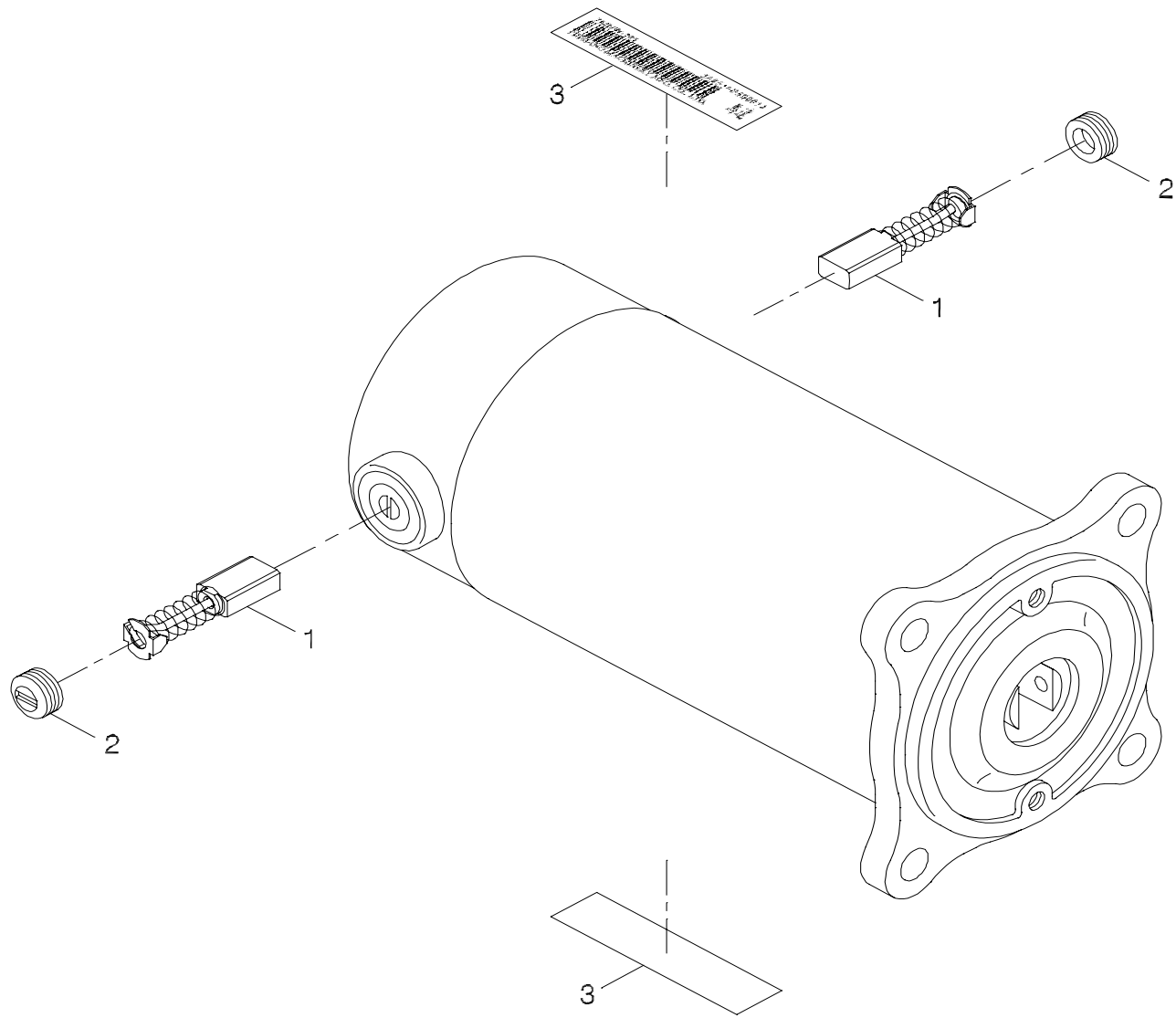


FIG.4

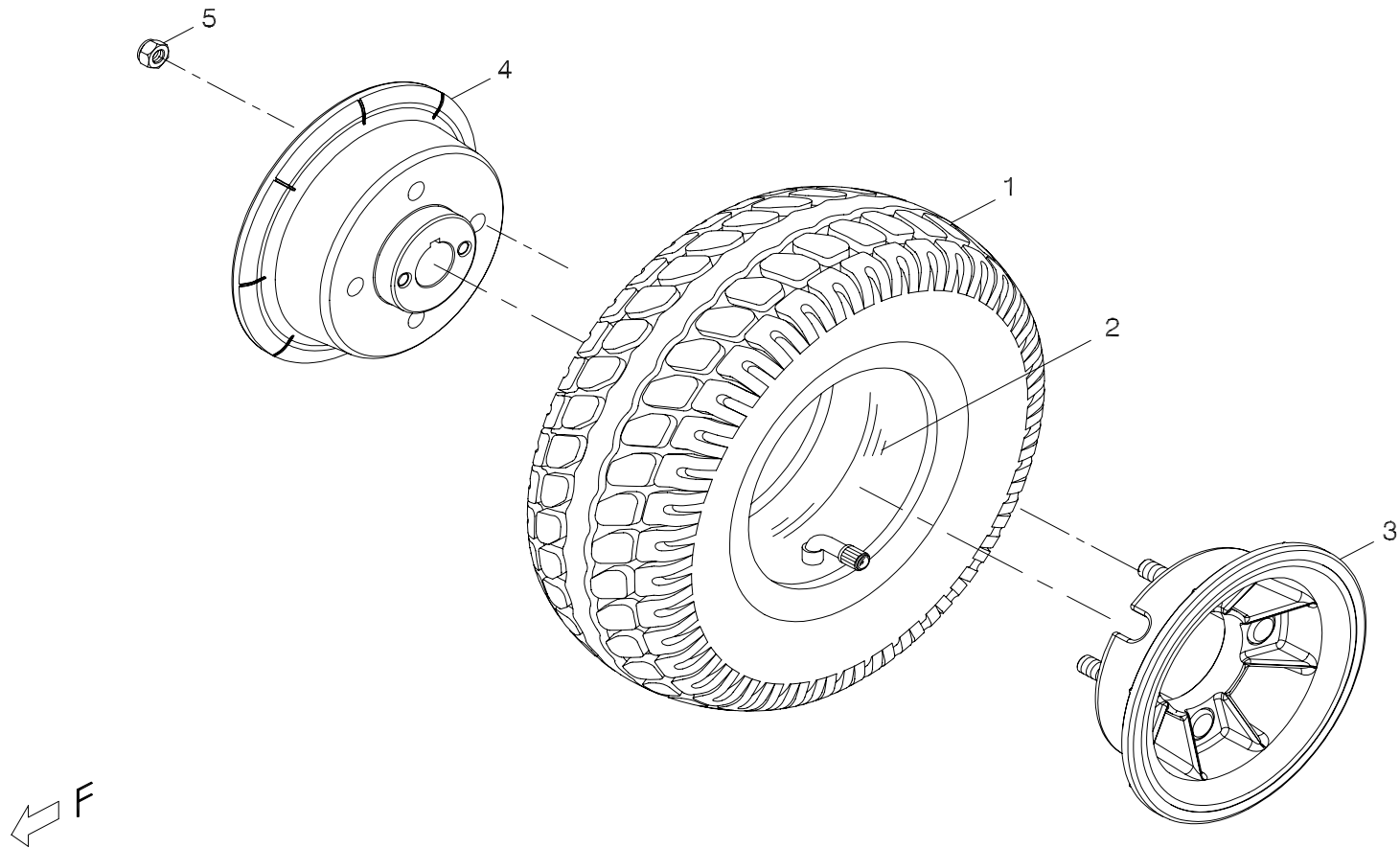


FIG.5

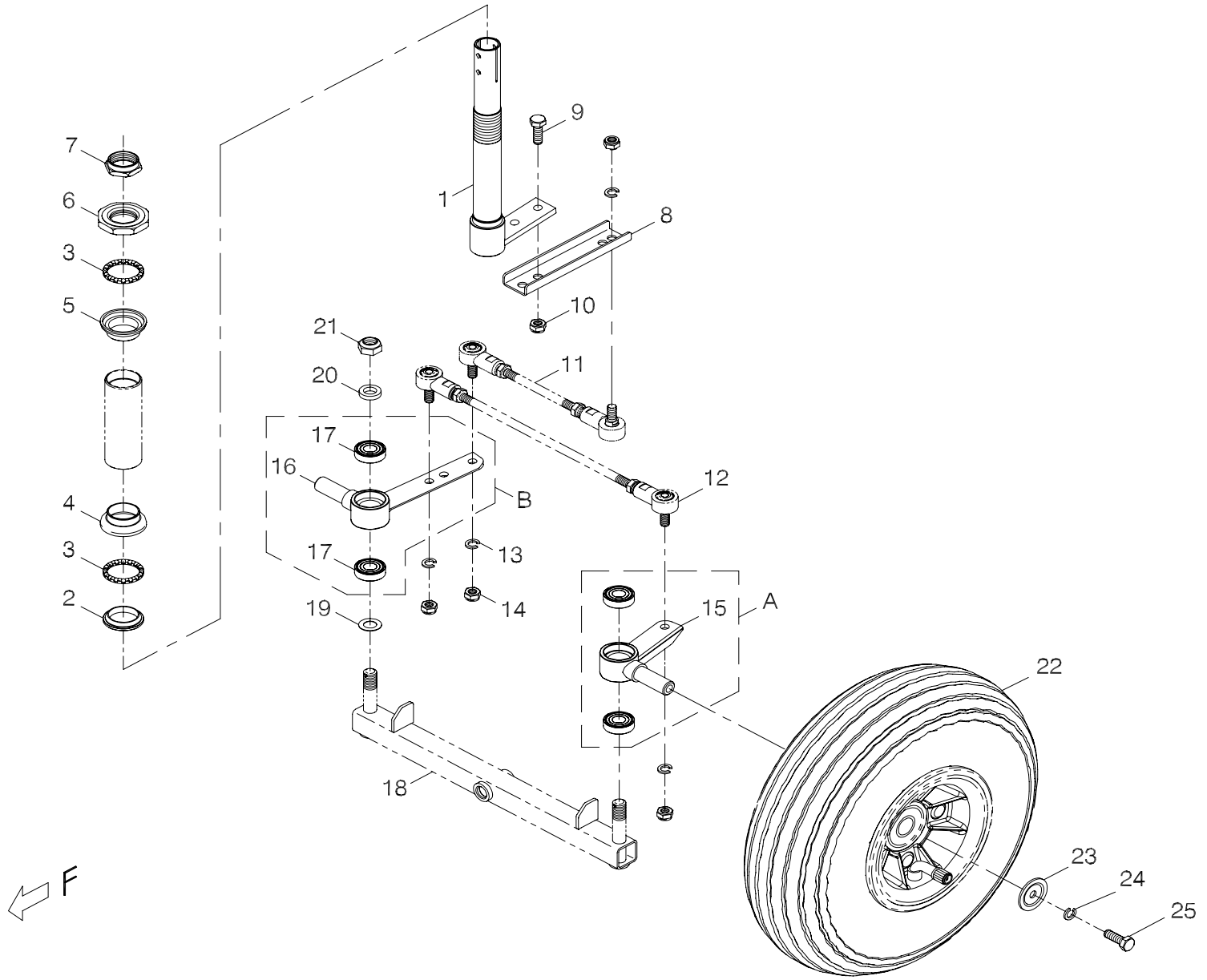


FIG.6

FIG. & Index NO.	Part NO.	Qty.	Description	Specification
6	-----		Front axle assembly	
6-1	101501-89100	1	Steering shaft assembly	889
			-----*-----	
6-2	201401-88200	1	Bearing bushing	φ27
6-3	201402-88200	2	Steering Bearings	5/32*16
6-4	201403-88200	1	Bearing housing	φ30
6-5	201404-88200	1	Bearing housing	φ30
6-6	201405-88200	1	Bearing bushing	Large octangle
6-7	201406-88200	1	Steering Head Nut	Dia 22.2
			-----*-----	
6-8	4001035-00	1	U type connecting plate	A35
6-9	5001-08020-210	2	Hex head screw	M8*P1.25*20L,Multicolored Galvanized
6-10	5012-08013-200	2	Nylon lock nut	M8*P1.25*13 7.8t,Multicolored Galvanized
			-----*-----	
6-11	-----	REF(1)	Connecting rod assembly (Short)	
6-12	-----	REF(1)	Connecting rod assembly (Long)	
6-13	5022-08013-210	4	Spring washer	φ8*13,Multicolored Galvanized
6-14	5012-08013-200	4	Nylon lock nut	M8*P1.25*13 7.8t,Multicolored Galvanized
			-----*-----	
6-A	102903-88100	1	Front wheel axle assembly	Left,Short
6-15	202902-88101	1	Front wheel axle	Short-FCD,Black,Left
6-17	505101-60012-01	2	Ball bearing	#6001zz,NBN
			-----*-----	
6-B	102904-88100	1	Front wheel axle assembly	Right,Long

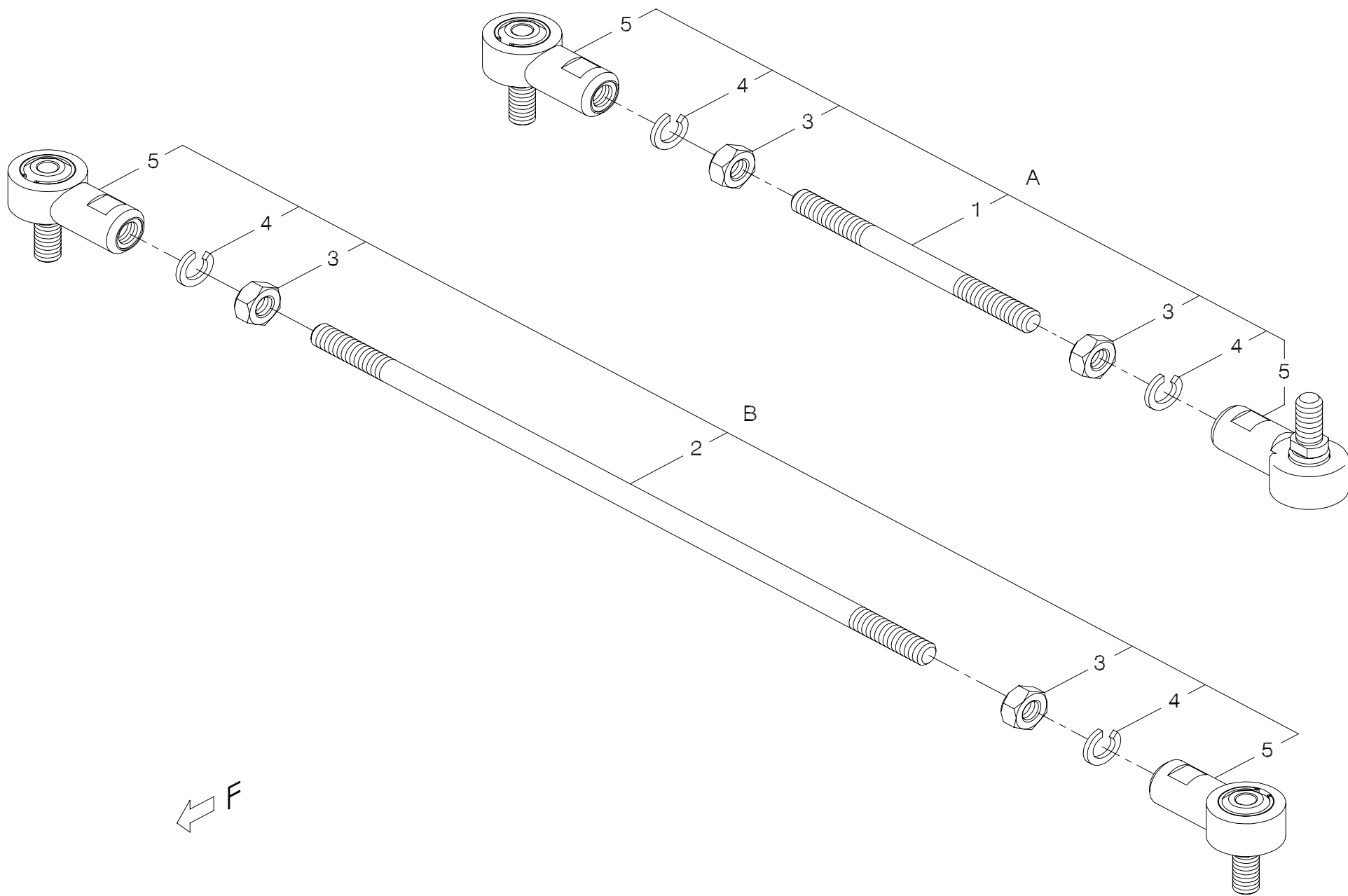


FIG.7

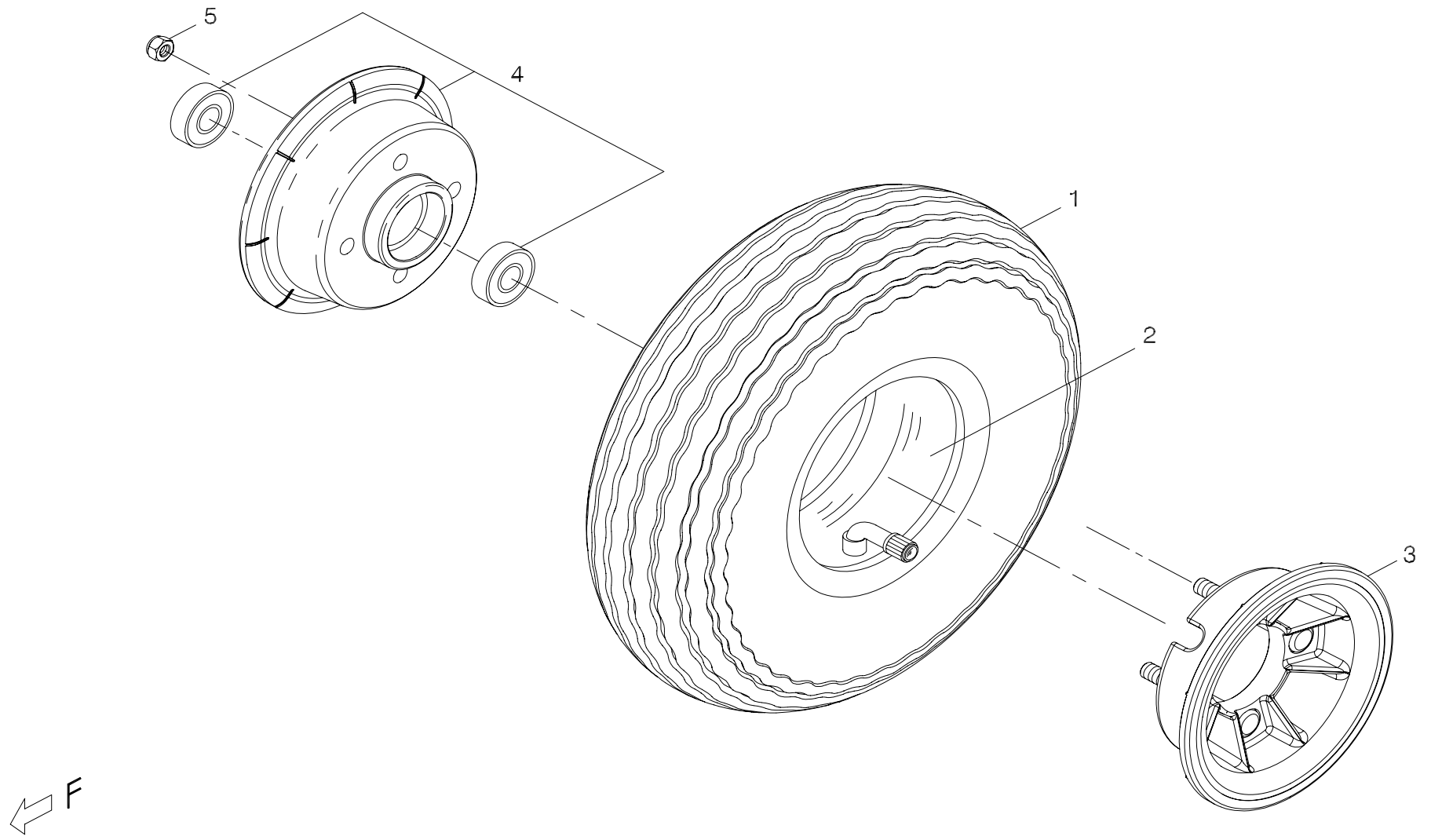


FIG.8

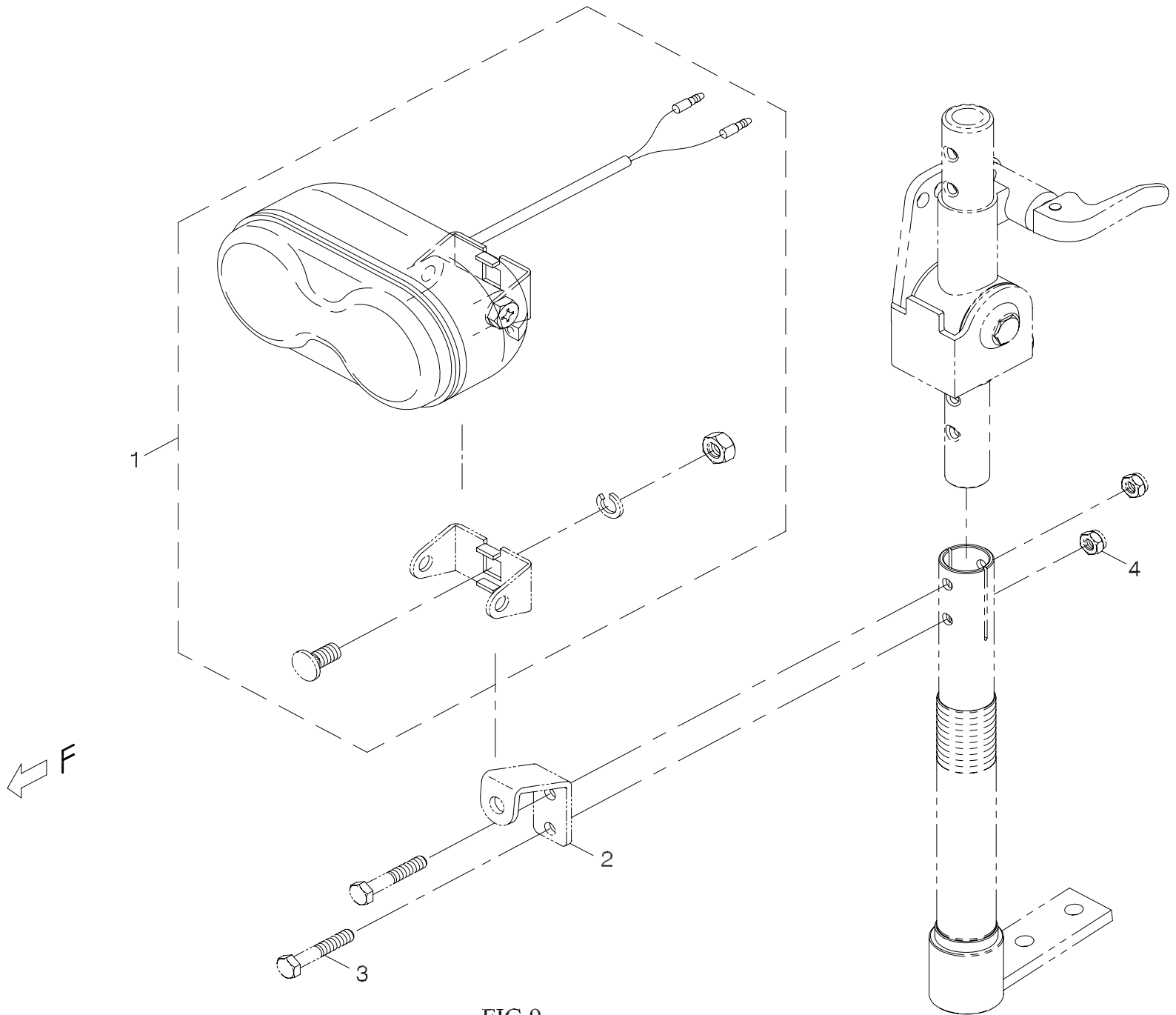


FIG.9

FIG. & Index NO.	Part NO.	Qty.	Description	Specification
9	-----		Head light assembly	
9-1	108101-88104	1	Head light assembly	E-1
			----- * -----	
9-2	-----	REF(1)	Head light plate	
9-3	-----	REF(4)	Hex cap screw	
9-4	-----	REF(4)	Nylon lock nut	
				P21

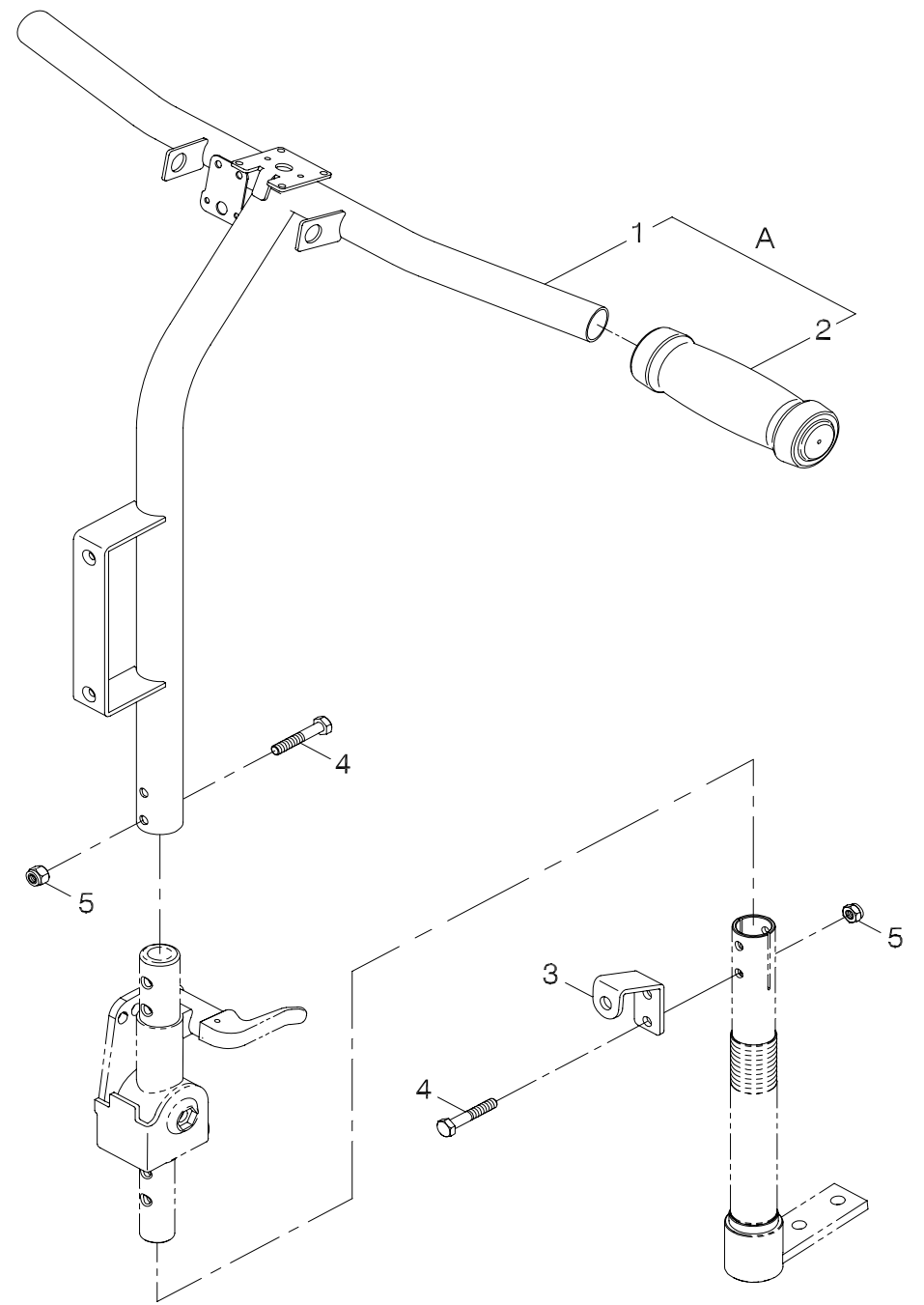
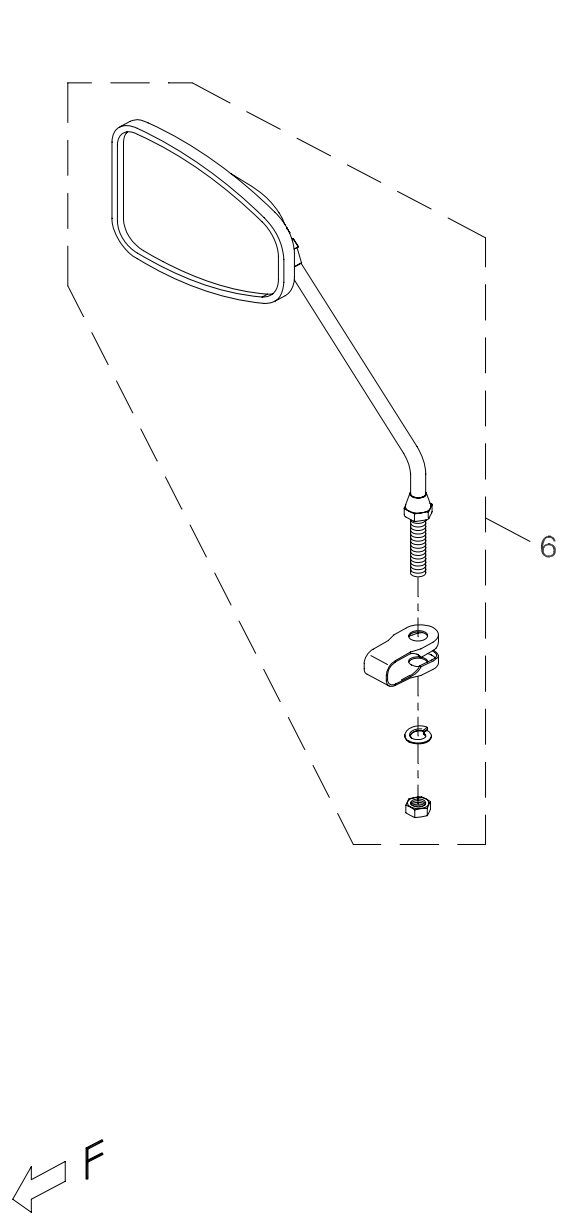


FIG.10

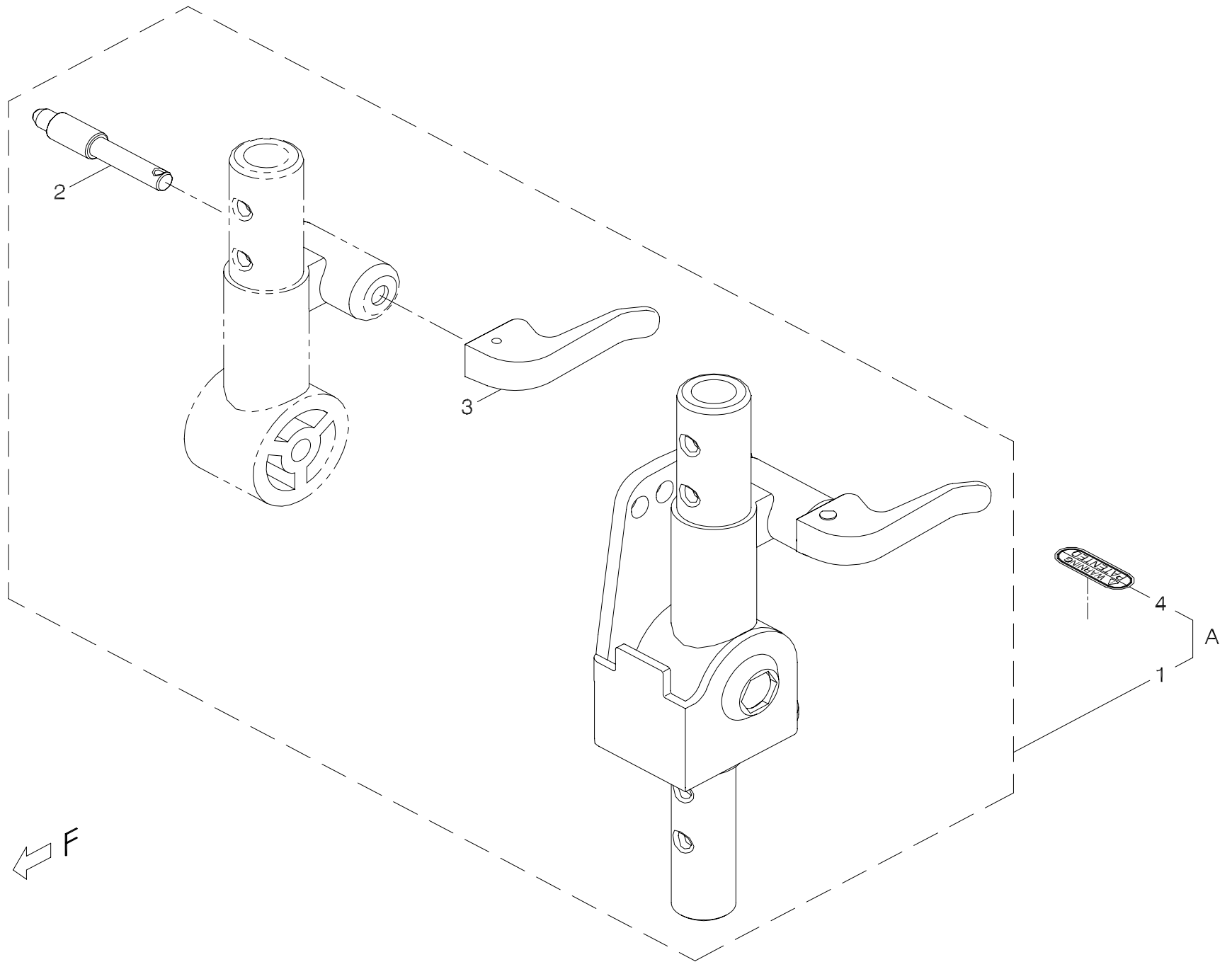


FIG.11

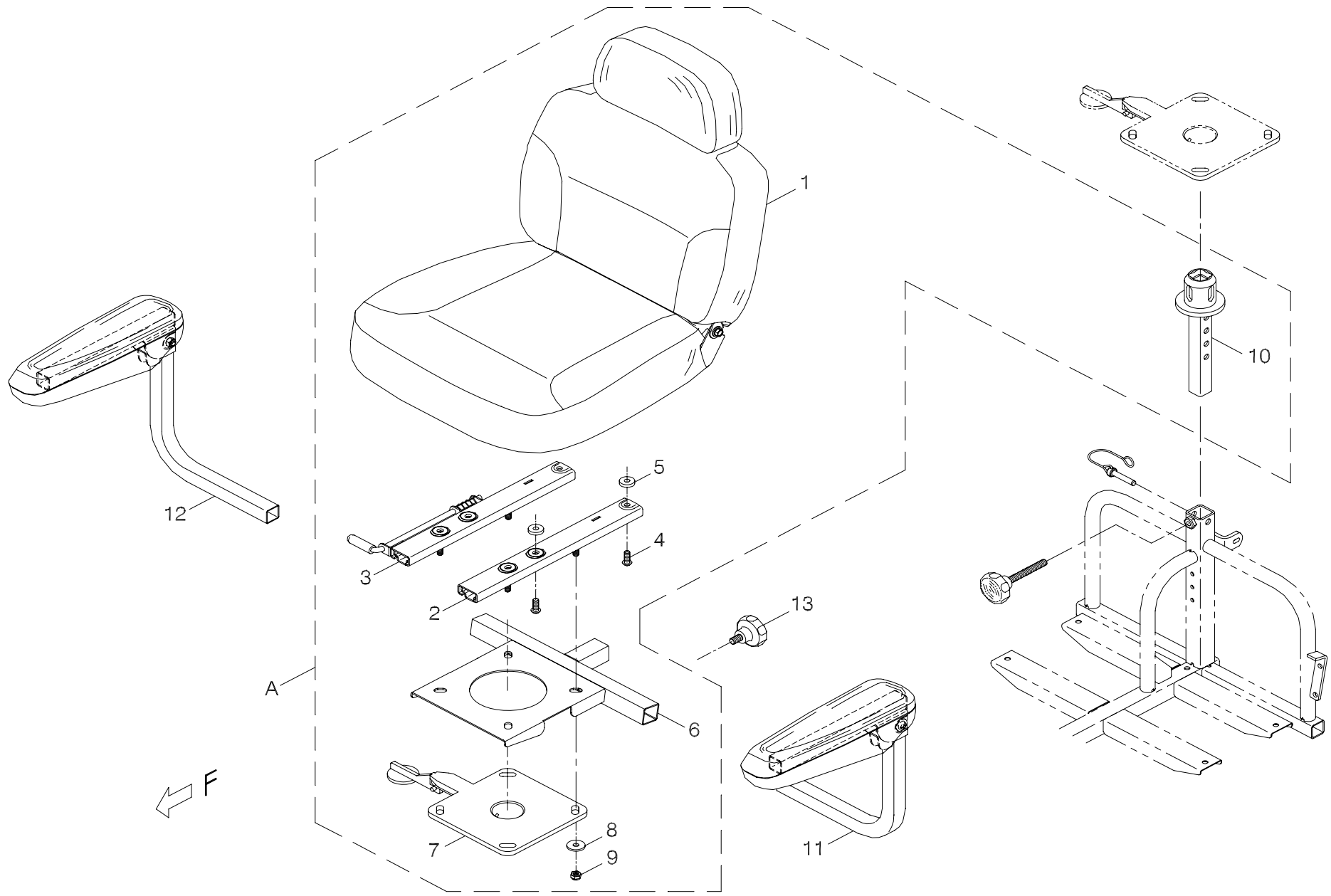


FIG.12

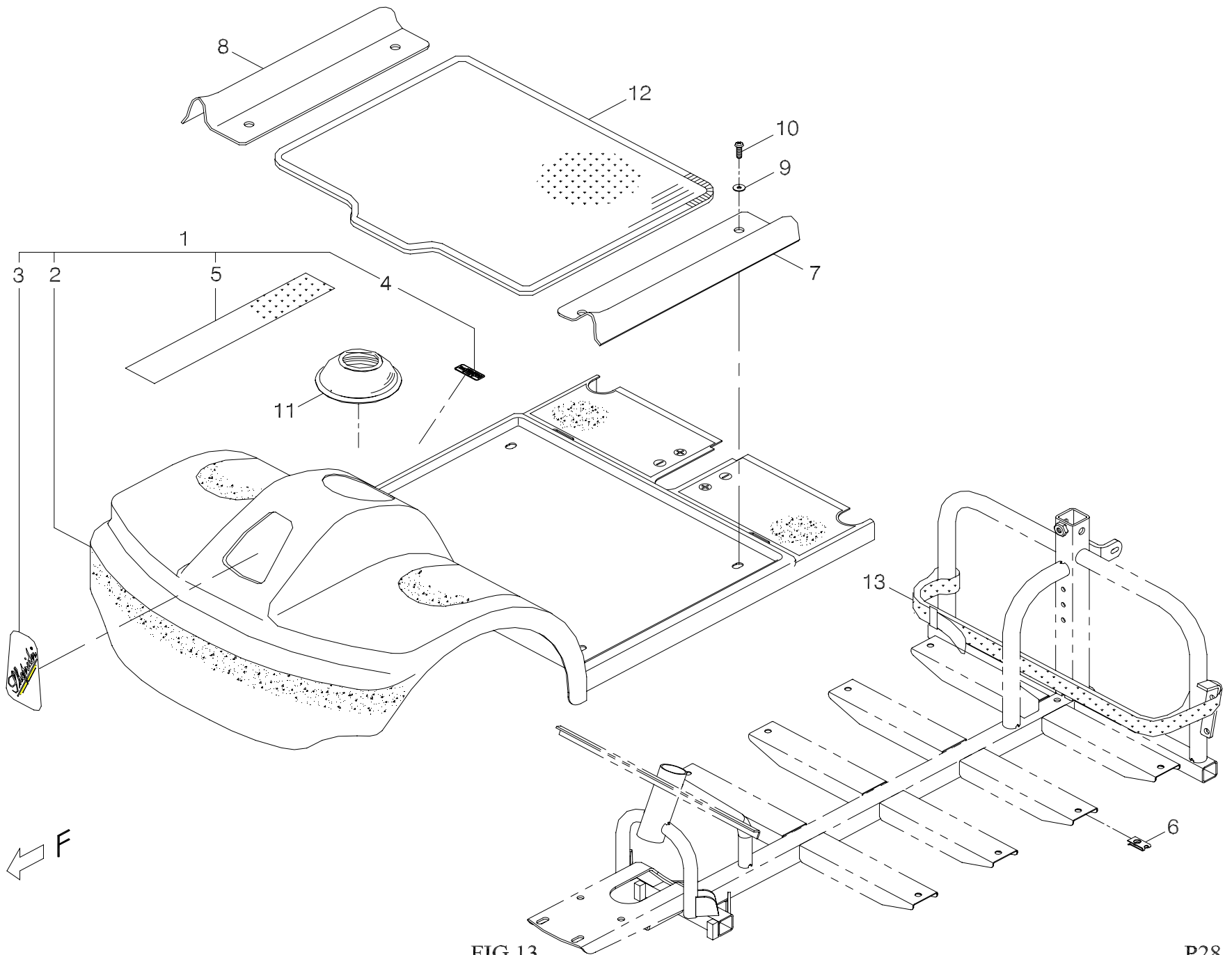


FIG.13

FIG. & Index NO.	Part NO.	Qty.	Description	Specification
13-1	103102-89100-42	1	Front chassis cover assembly	w/decal,889,Blue
13-2	103101-89100-42	1	Front chassis cover assembly	889,Blue
13-3	301204-00	1	Decal	T4
13-4	301127-03	1	Front chassis cover sticker	N27-3
13-5	203103-88100	1	Velcro	50W*25M,Hook
			-----*-----	
13-6	202921-88100	4	U type plate nut	Close
13-7	203501-89100	1	Protect cover	L,889 Black
13-8	203502-89100	1	Protect cover	R,889 Black
13-9	5021-06018-440	4	Washer	φ6*18*1.6t,SUS
13-10	5005-06020-440	4	Screw	M6*P1.0*20L,SUS
			-----*-----	
13-11	209903-88100	1	Rubber cover	A1
13-12	209906-89101	1	Carpet	889
13-13	209920-88100	1	Fastening strap	25mmW*24A+128Bcm
				P29

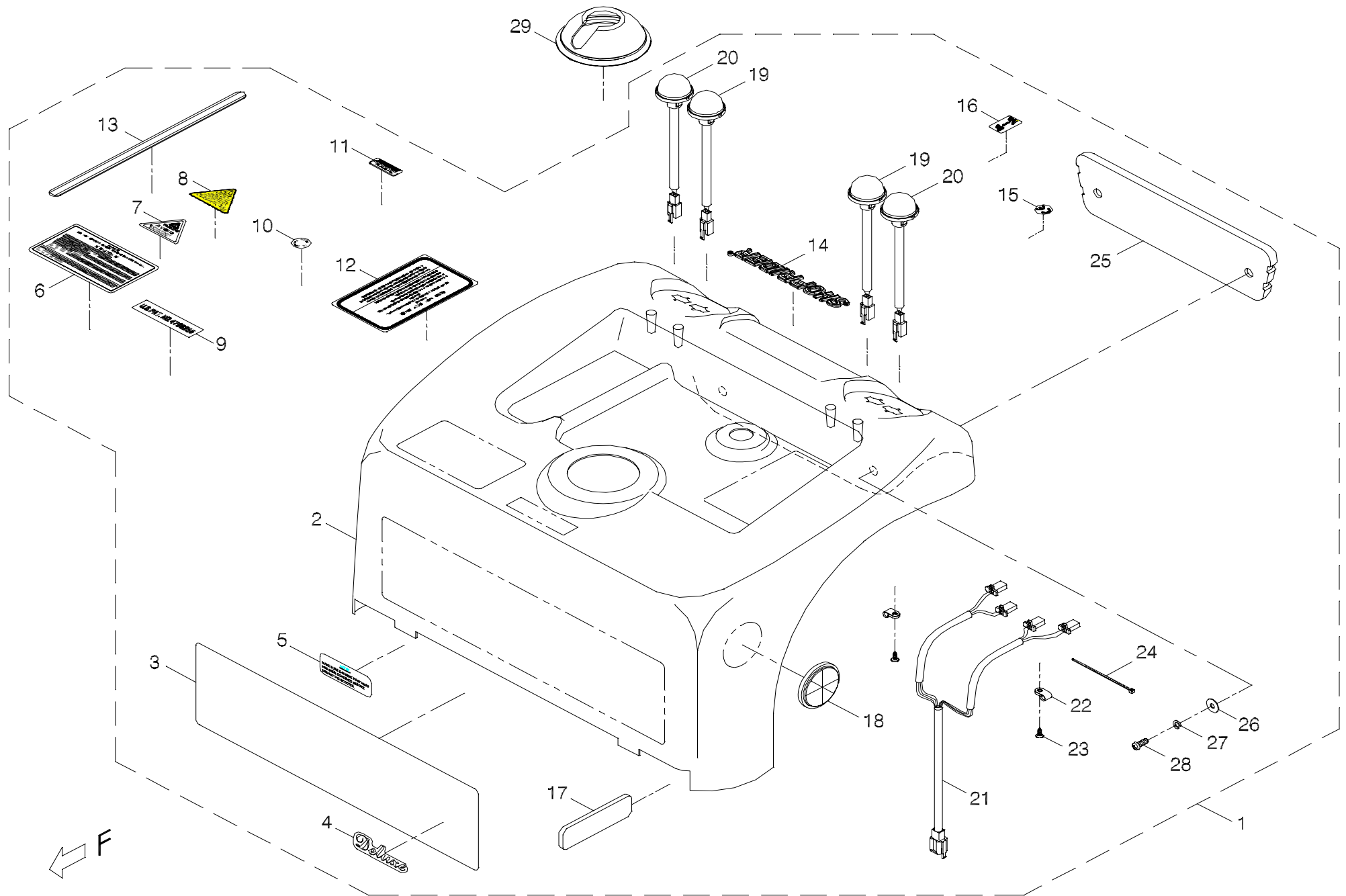


FIG.14

FIG. & Index NO.	Part NO.	Qty.	Description	Specification
14-1	103202-89113-42	1	Rear chassis cover assembly	w/decal,889,Blue,2Y2R
14-2	103201-89101-42	1	Rear chassis cover assembly	889,Blue,With hole
14-3	203203-89101	1	Emblem	Rear,A02,440*120mm
14-4	301206-00	1	Decal	T6,Deluxe
14-5	301106-00	1	Instruction sticker	N6
14-6	301162-01	1	Warning sticker	N62-1
14-7	301123-07	1	Warning sticker	N23-7,Large
14-8	301123-23	1	Warning sticker	N23-23
14-9	301146-04	1	Patent sticker	N46-4,PAT NO.4798255
14-10	301116-01	1	MIT sticker	N16-1
14-11	301179-04	1	Instruction sticker	N79-4
14-12	301109-02	1	Warning sticker	N9-2
14-13	203202-89100	2	Striped tape	Rear,14W*300L
14-14	209939-68500	1	Trademark	SHOPRIDER
14-15	301166-02	1	CE Mark Label	N66-2
14-16	301187-11	1	ON-BRAKE-OFF LABEL	N87-11
14-17	301301-00	2	Sponginess decal	107*30*6t
14-18	203205-88100-A2	2	Reflector	TF-310Y, Yellow(E1)
14-19	108102-67101	2	Tail Light Assembly	Round/Plug,Red,FUAN 0054
14-20	108103-67101-A2	2	Winker/Indicator Assembly	Round/Plug, Yellow,FUAN 0054,A2
14-21	207018-67200	1	Winker cable	RA-889-N
14-22	209936-77300	2	Fixture for wiring	UC-1.5,Black
14-23	5006-04012-211	2	Self tapping screw	M4*12L,Multicolored Galvanized
14-24	505201-00900-50	1	Cable Tie	YJ-90,Black

FIG. & Index NO.	Part NO.	Qty.	Description	Specification
14-25	209905-89100	1	Rear bumper	
14-26	5021-06018-210	2	Washer	ϕ6*18*1t, Multicolored Galvanized
14-27	5022-06010-210	2	Spring washer	ϕ6*10, Multicolored Galvanized
14-28	5005-06016-210	2	Screw	M6*P1.0*16L, Multicolored Galvanized
			-----*-----	
14-29	209904-89700	1	Rubber cover	A9

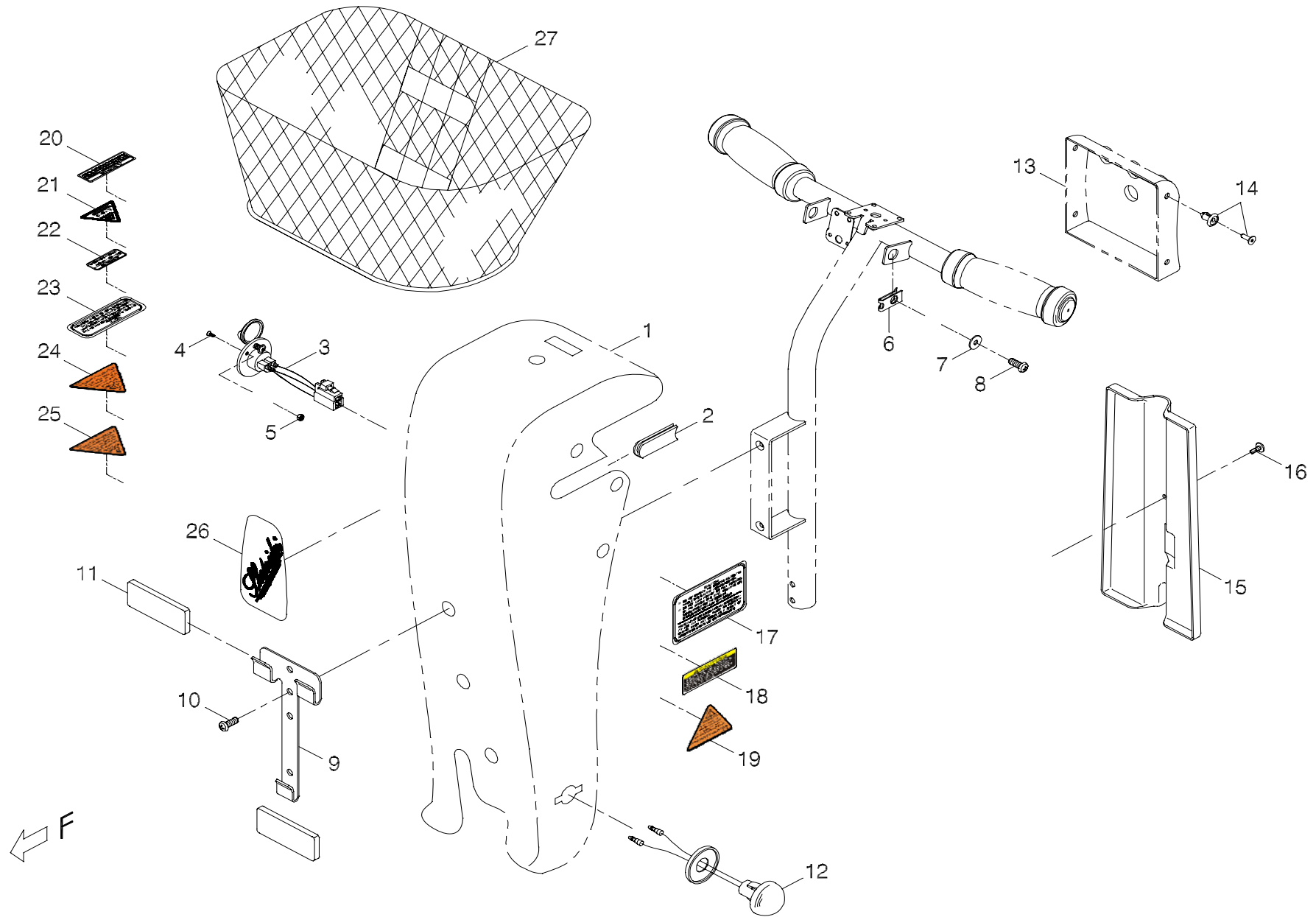


FIG.15

FIG. & Index NO.	Part NO.	Qty.	Description	Specification
15	-----		Handle bar cover assembly	
15-1	-----	REF(1)	Front tiller cover assembly	
15-2	209902-77100	1	Rubber cover	
			----- * -----	
15-3	207006-88109	1	Charging cable	KA-888-H11
15-4	5009-03010-440	2	Screw	M3*P0.5*10L,SUS
15-5	5012-03006-200	2	Nylon lock nut	M3*P0.5*6,Multicolored Galvanized
			----- * -----	
15-6	202921-88100	2	U type plate nut	Close
15-7	5021-06018-440	2	Washer	φ6*18*1.6t,SUS
15-8	5005-06016-440	2	Screw	M6*P1.0*16L,SUS
			----- * -----	
15-9	4001151-02	1	Basket Holder	A151-2
15-10	5005-06016-440	2	Screw	M6*P1.0*16L,SUS
15-11	301307-00	2	Sponginess decal	75*30*6t
15-12	108103-88104	2	Winker assembly	Round/,Plain yellow,2 FUAN 0054
			----- * -----	
15-13	-----	REF(1)	Rear Cover Assembly for Tiller	
15-14	209912-78500-A3	4	Plastic Stud	G3020060
			----- * -----	
15-15	203503-80500	1	Cable Cover	888A/T-bar
15-16	5006-04012-310	1	Self Tapping Screw	M4*12L,Black,888A
			----- * -----	
15-17	301139-02	1	Instruction sticker	N39-2

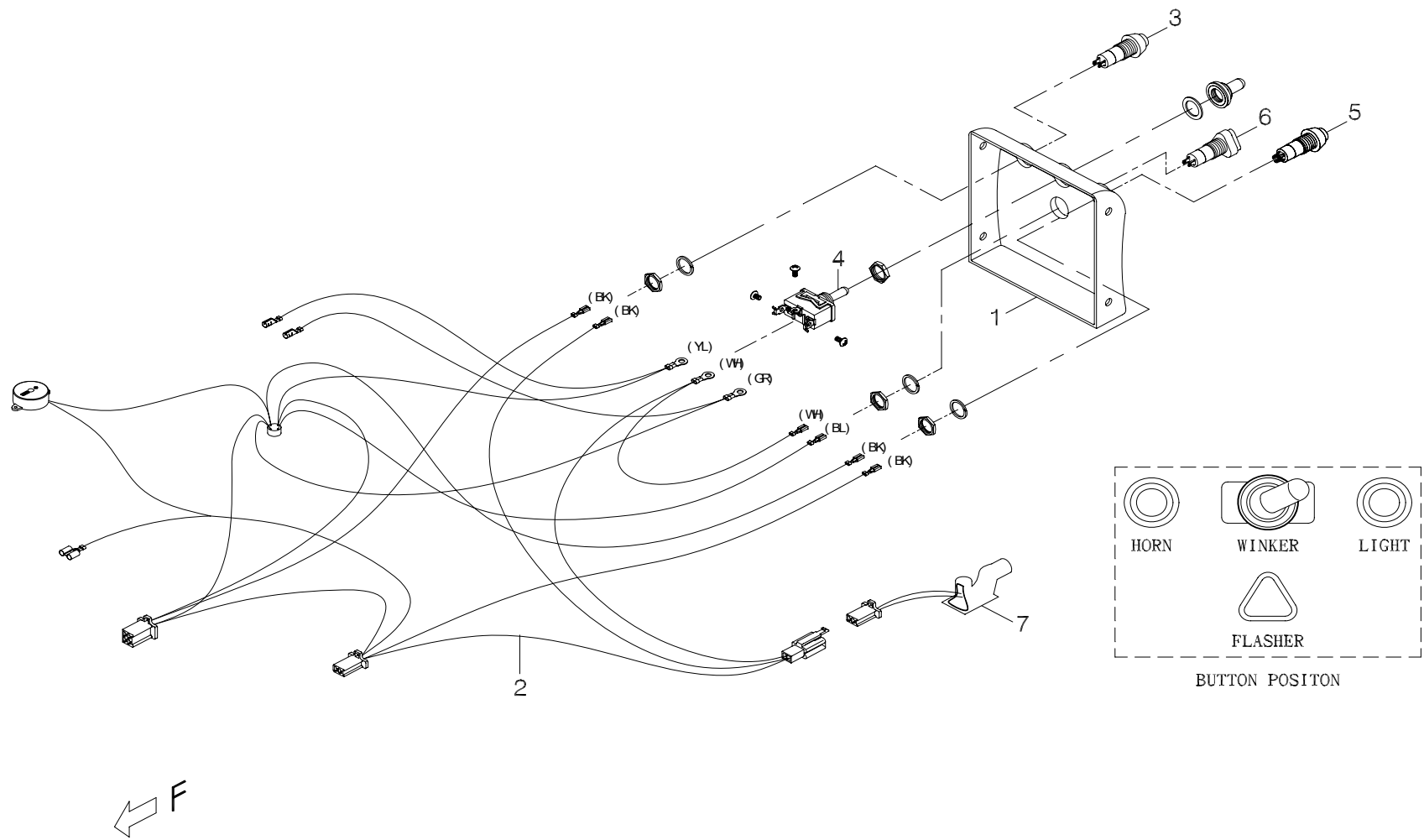


FIG.16

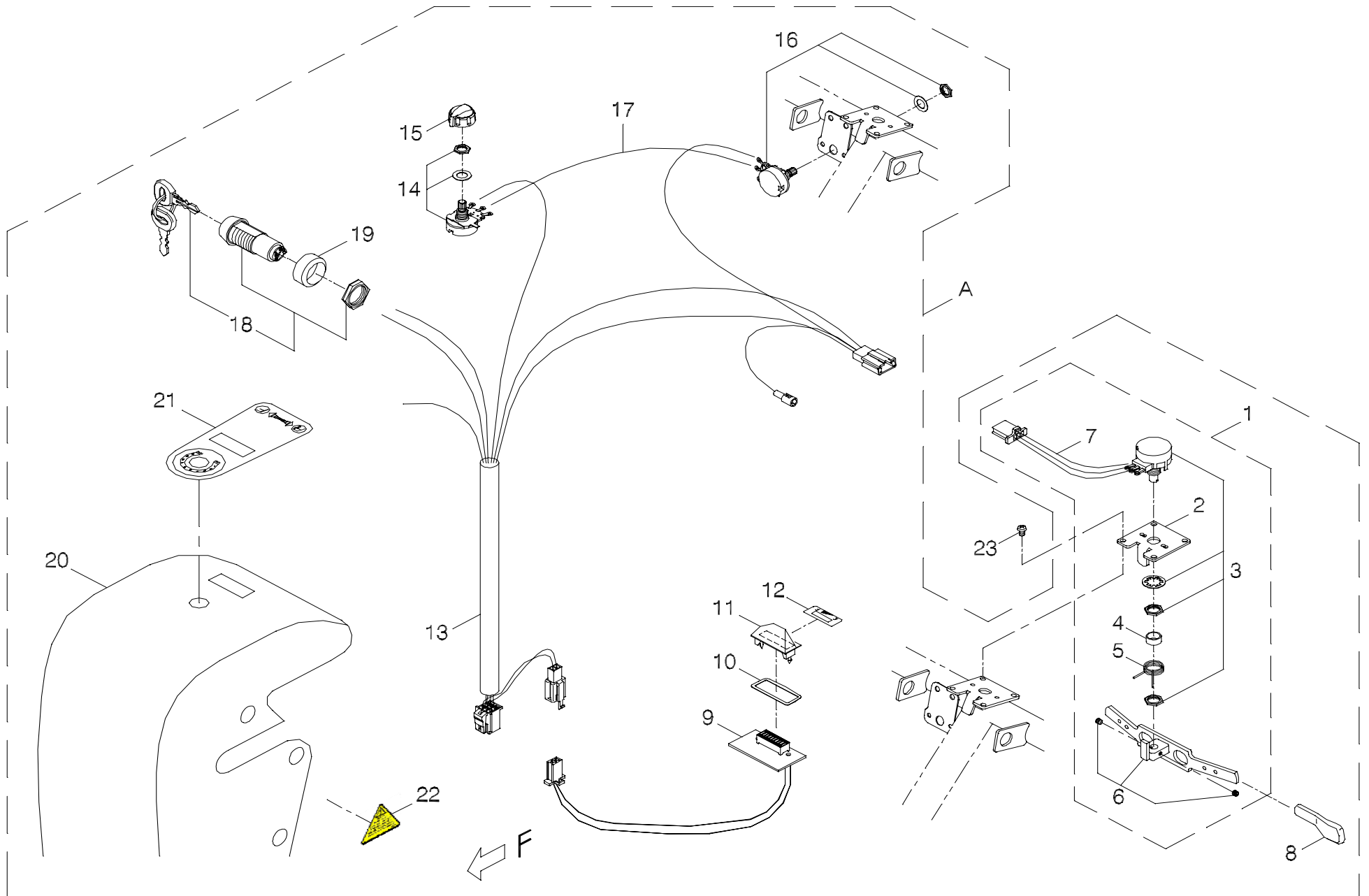


FIG.17

FIG. & Index NO.	Part NO.	Qty.	Description	Specification
17-A	106112-80518-42-A2	1	Upper controller	888/889NR,BLUE
17-1	106108-66403-A2	1	Potentiometer	T-bar,5K#3
17-2	4001144-03	1	Potentiometer Fixing plate	A144-3,φ4.1
17-3	206103-88103-A2	1	Potentiometer	5K#3-A2
17-4	4003198-00	1	Spacer	C198(φ11.3*φ9.5*5.5L)
17-5	206106-88100	1	Spring	
17-6	206107-88104	1	Throttle lever	#5
17-7	207010-66402	1	Control cable	KA-889-K6
			-----*-----	
17-8	206122-88103	2	Extension, throttle lever	PVC,Black#2
17-9	206114-66103-A2	1	Throttle PCB w/i Battery Gauge	AC LED-B
17-10	206128-80500	1	Gasket	□34.7*12.1*0.3T
17-11	206126-88100	1	Indicator lamp	Black
17-12	301192-00	1	Decal	N92,E,-,F
			-----*-----	
17-13	207010-66100	1	Control cable	KA-888-K7
17-14	206109-88100-A2	1	Variable resistor	B25K(A2)
17-15	206113-88101-A2	1	Speed Dial Knob	CF-X4-T
17-16	206109-66800-A2	1	Variable resistor	B10K(A2)
17-17	207012-66200	1	Cable	KA-888-G5
			-----*-----	
17-18	106106-88103-A2	1	ASM,IGNITION W/KEYS	2-Way Key,4A 125VAC 2Amp 250VAC
			-----*-----	
17-19	4003260-00	1	Spacer	C260(φ26*φ20*12L)

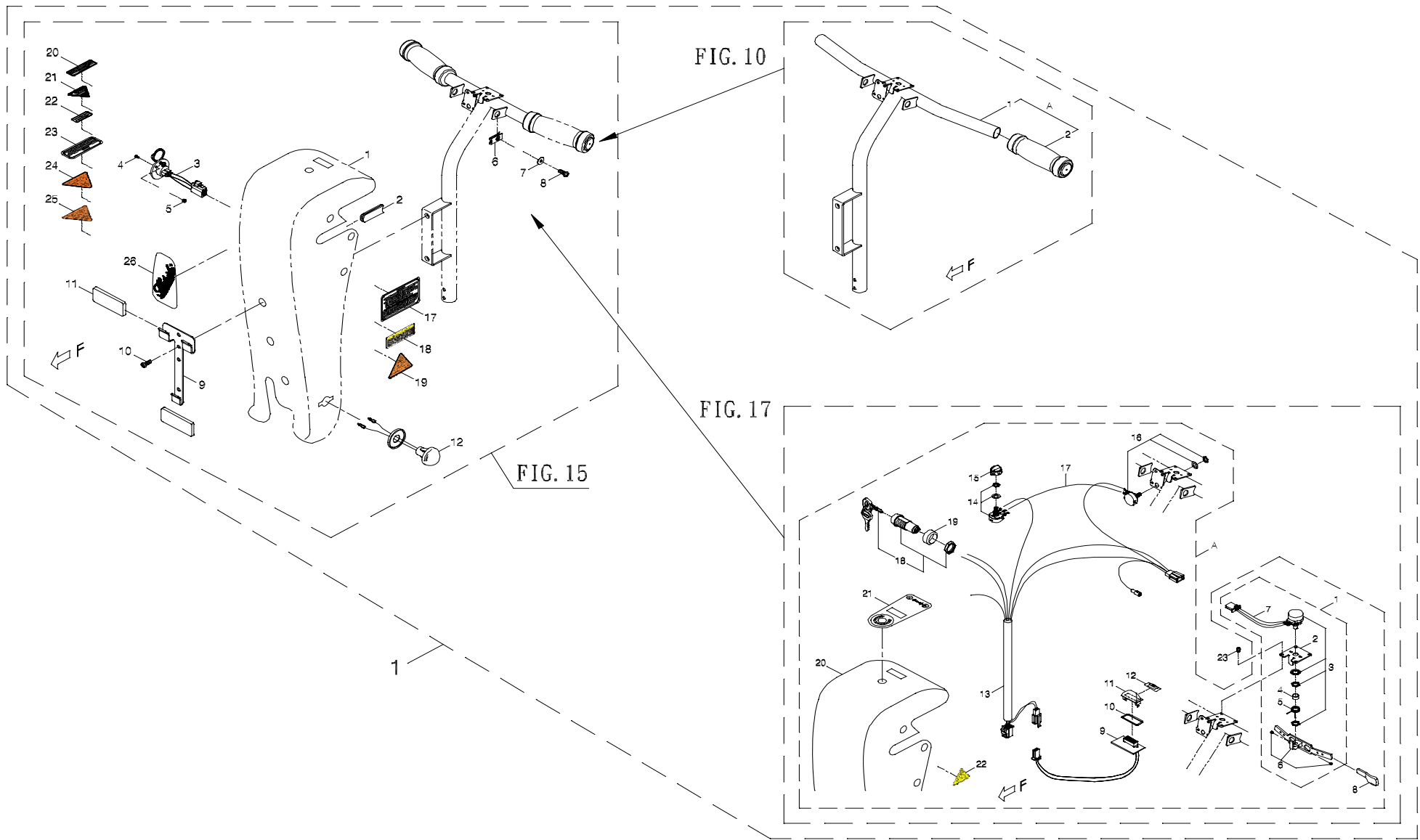


FIG.18

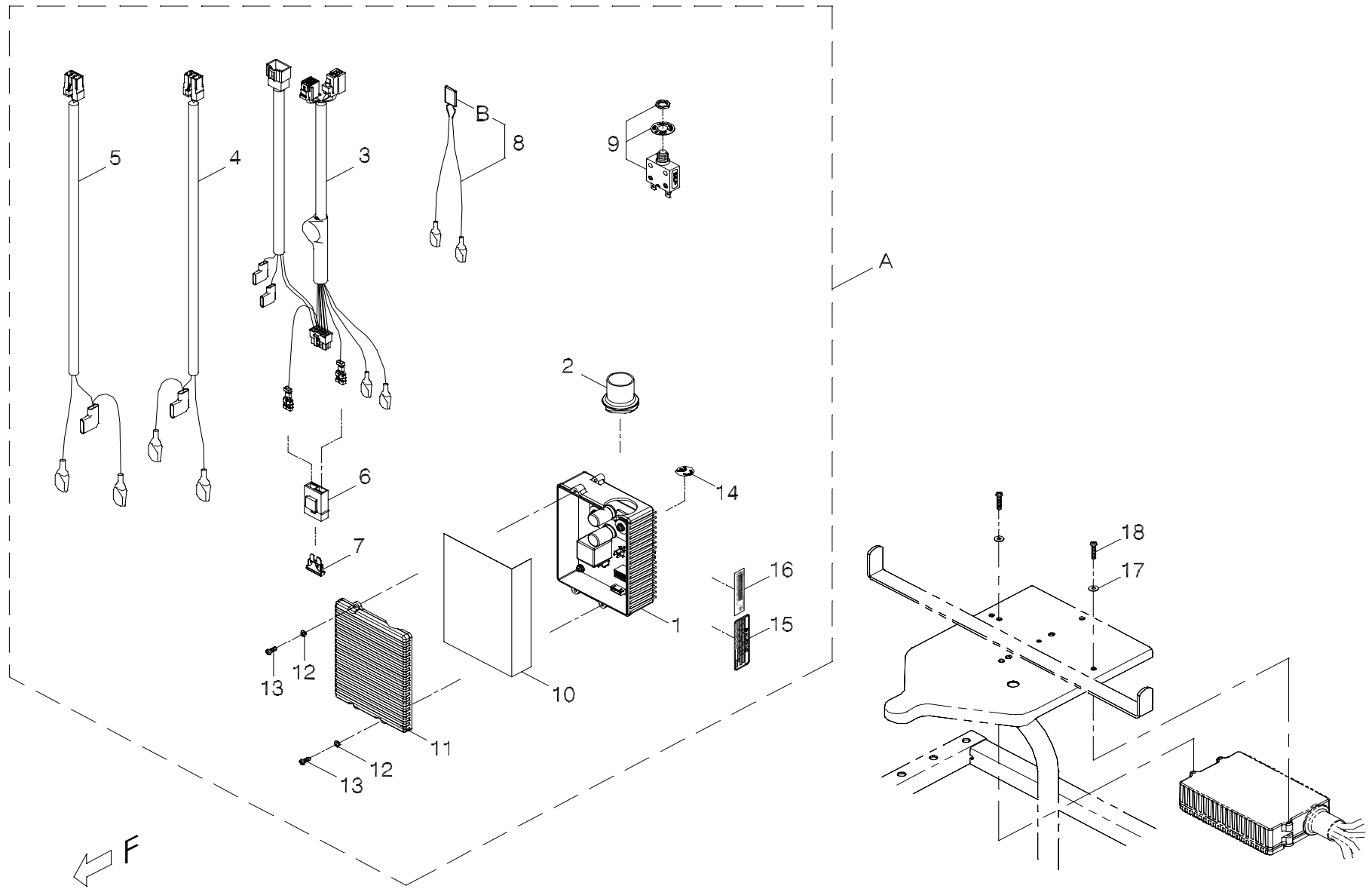


FIG.19

FIG. & Index NO.	Part NO.	Qty.	Description	Specification
19-A	106202-88908-A2	1	Main control box ass'y	AC2-110,889NR
19-1	206221-88900	1	Controller	AC2-110(w/i case)
19-2	206210-88103	1	Protection	AC2-110/150
19-3	207005-88109	1	Main control cable	KA-888-J15
19-4	207003-89101	1	Power cable	+,KA-889-D1
19-5	207004-89101	1	Power cable	-,KA-889-E1
19-6	206206-88101	1	Fuse housing	
19-7	206901-88100	1	Fuse	2A
19-8	107014-89100	1	Connection cable	KA-888-L7
19-B	206903-89100	1	Fuse	RLD30P900U
19-9	206207-88102	1	Circuit breaker	50A
19-10	302002-00	1	Insulator	152*129m/m*0.25t
19-11	206209-68500	1	Control box cover	AC2-110/150
19-12	5022-04007-210	2	Spring washer	φ4*7*1.25t,Multicolored Galvanized
19-13	5005-04010-210	2	Screw	M4*P0.7*10L,Multicolored Galvanized
19-14	301166-02	1	CE Mark Label	N66-2
19-15	301174-17	1	Warning sticker	N74-17
19-16	-----	REF(1)	Decal	
-----	505201-00900-50	3	Cable Tie	YJ-90,Black
-----	505201-01500-50	2	cable Tie	CV-150B
			----- * -----	
19-17	5021-04010-210	2	Washer	φ4*10*1t,Multicolored Galvanized
19-18	5005-04020-210	2	Screw	M4*P0.7*20L,Multicolored Galvanized

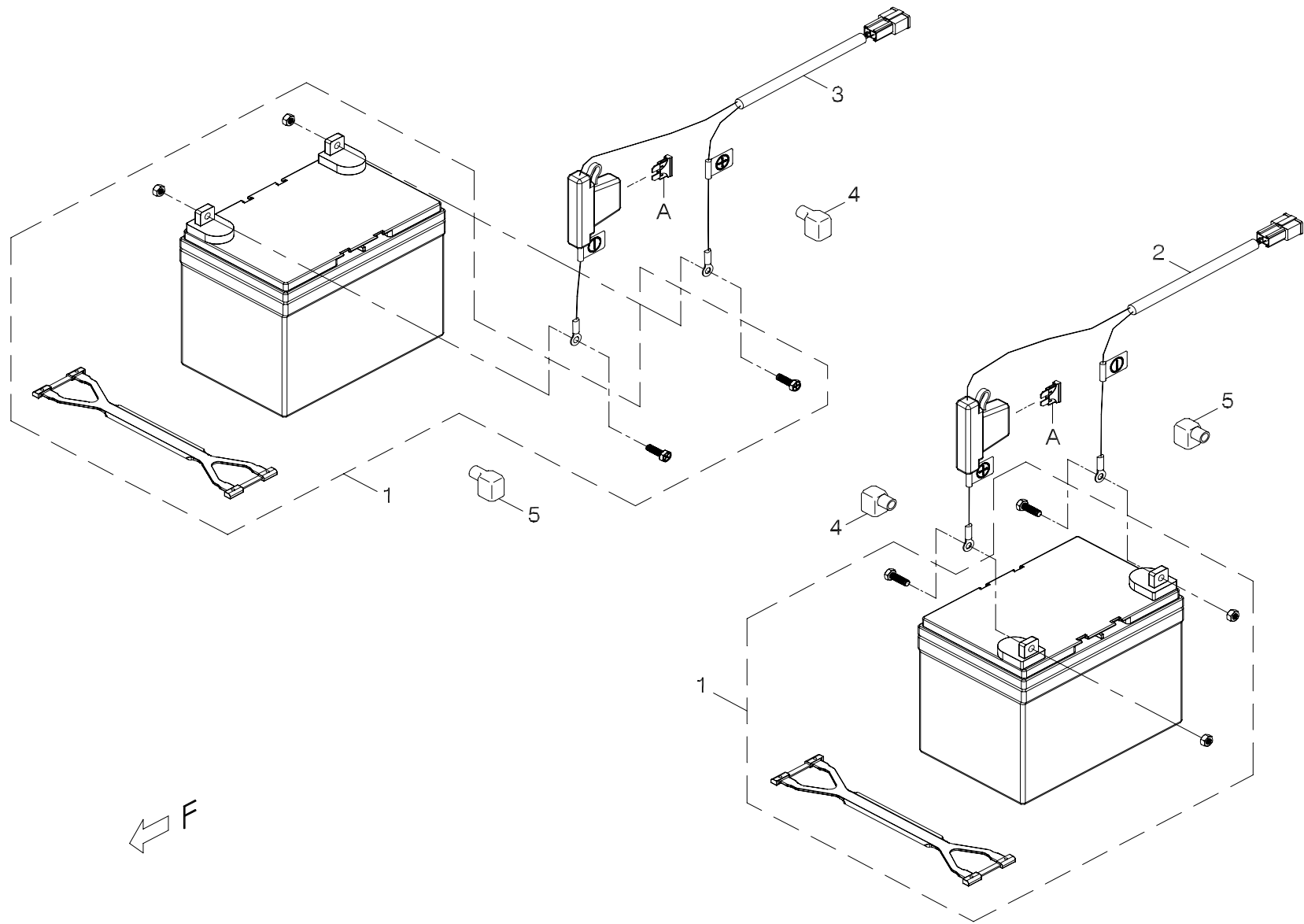


FIG.20

FIG. & Index NO.	Part NO.	Qty.	Description	Specification
20	800501-889-00	1	W/ battery kit	889,36Ah
20-1	109101-88107-36P	2	Battery 36Ah	TEV12360 36P(PIHSIANG)
20-2	207001-89100	1	Battery cable	+,KA-889-F1A,50A Fuse
20-3	207002-89100	1	Battery cable	-,KA-889-F2A,50A Fuse
20-A	206901-88105	REF(2)	Fuse	50A
20-4	209913-88100	2	Protection	R
20-5	209914-88100	2	Protection	B
				P46

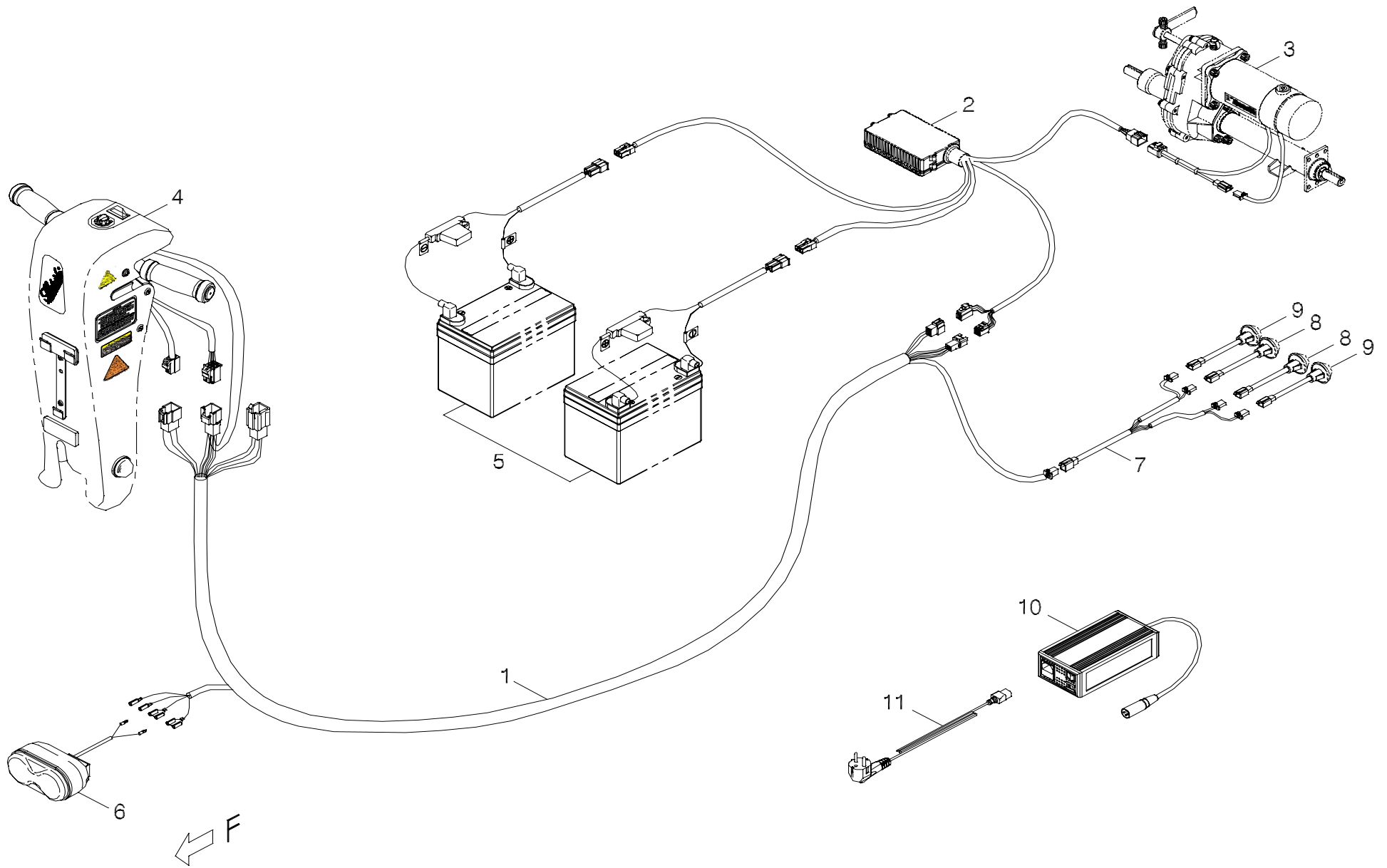
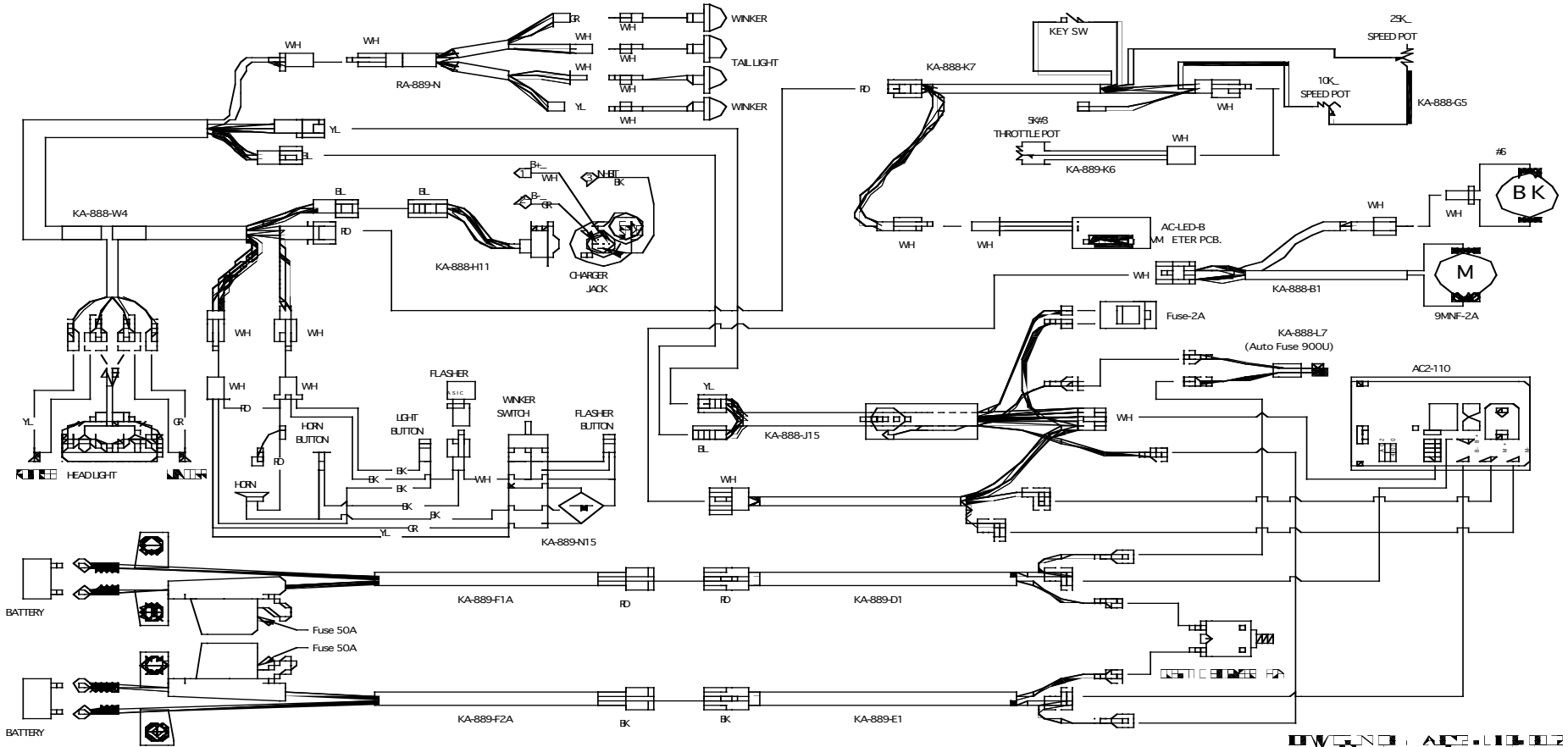


FIG.21

FIG. & Index NO.	Part NO.	Qty.	Description	Specification
21	-----		Control and battery wiring illustration	
21-1	207027-88104	1	Control connection cable assembly	KA-888-W4
			----- * -----	
21-2	-----	REF(1)	Main control box ass'y	
			----- * -----	
21-3	-----	REF(1)	Drive-train assembly	
			----- * -----	
21-4	-----	REF(1)	Handle bar assembly	
			----- * -----	
21-5	-----	REF(1)	W/ battery kit	
			----- * -----	
21-6	-----	REF(1)	Head light assembly	
			----- * -----	
21-7	-----	REF(1)	Winker cable	
21-8	-----	REF(2)	Tail Light Assembly	
21-9	-----	REF(2)	Winker/Indicator Assembly	
			----- * -----	
21-10	109201-88109-A2	1	Charger Off-Board	24V/4A,110-240V,4C24040
21-11	209201-88108	1	Power cord	Europe,ZGDZ1
			----- * -----	
-----	505201-00900-50	REF	Cable tie	YJ-90,Black
-----	505201-01200-50	REF	cable Tie	CV-120B
-----	505201-01500-50	REF	cable Tie	CV-150B
-----	505201-02000-50	REF	cable Tie	CV-200B

Wiring Diagram for TE-889NRF



DATE: 10/10/02
 DRAWN: AG

APPENDIX